

**CONACUORE**  
ONLUS  
Comitato Nazionale Associazioni Cuore

**uniti si vince!**

**PREVENZIONE =**  
cultura  
della salute

**PREVENZIONE =**  
+ salute  
- malati  
- sofferenze  
- spese  
sanitarie  
- tagli  
controproducenti

XIX CONGRESSO NAZIONALE  
**CONACUORE**  
19-20 maggio 2017

**Hotel Real Fini**  
*Palazzo del Re* \*\*\*\*\*  
Modena

Tema – **COME POTENZIARE LA COMUNICAZIONE  
A PARTIRE DAL MODO DI AFFRONTARE IL PROBLEMA TAVI.**

# Comunicare: che cosa vuol dire?

- ▶ mettere in comune, derivato di *commune*, propriamente, che compie il suo dovere con gli altri,
- ▶ composto di *cum* insieme e *munis* ufficio, incarico, dovere, funzione.

MENDING HEARTS

# Building a Better Valve

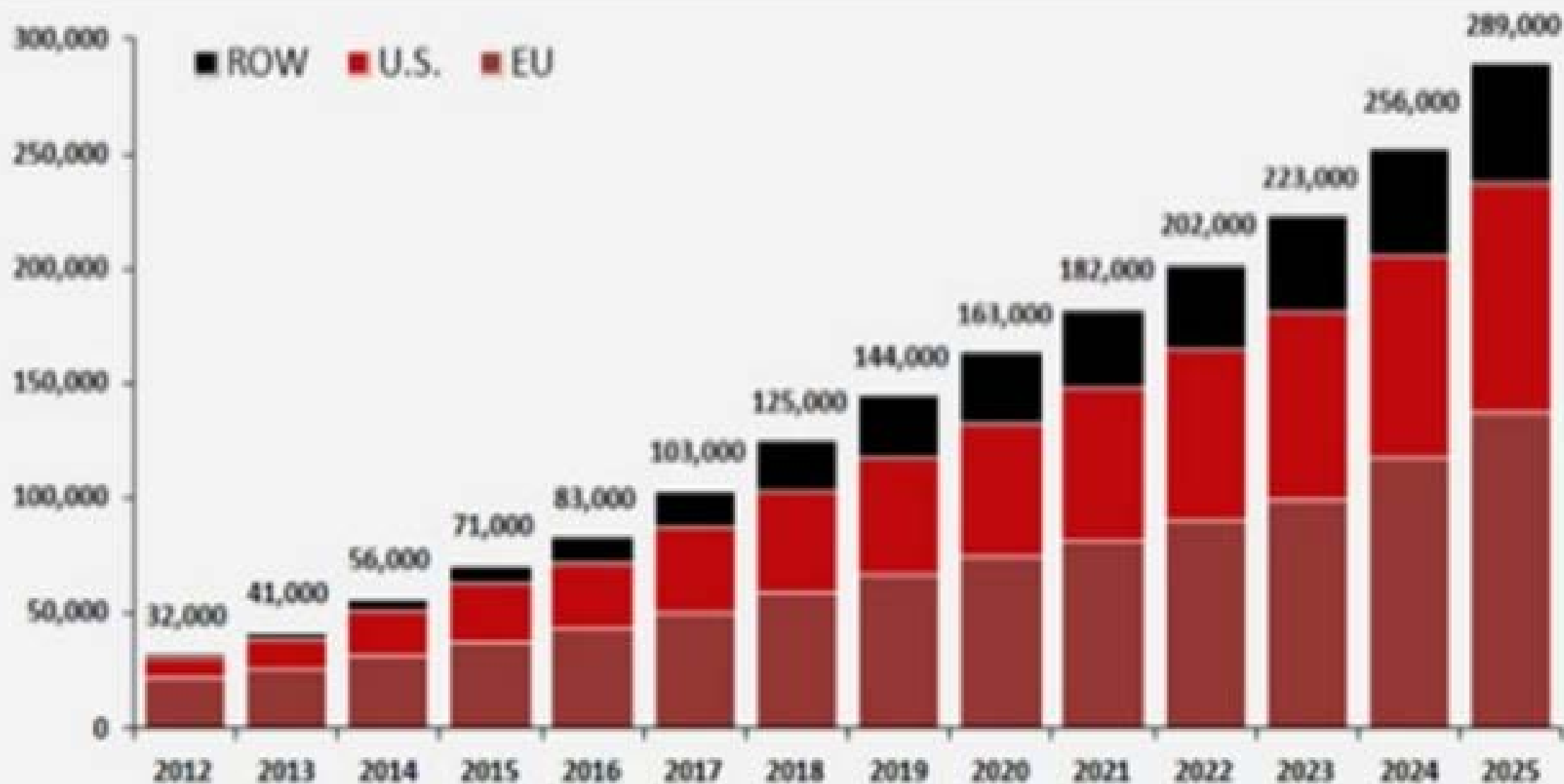
A new approach to replacing narrowed heart valves allows older and sicker patients to survive treatment.

By GINA KOLATA JUNE 20, 2015



Henry Kissinger

## Global TAVR Units

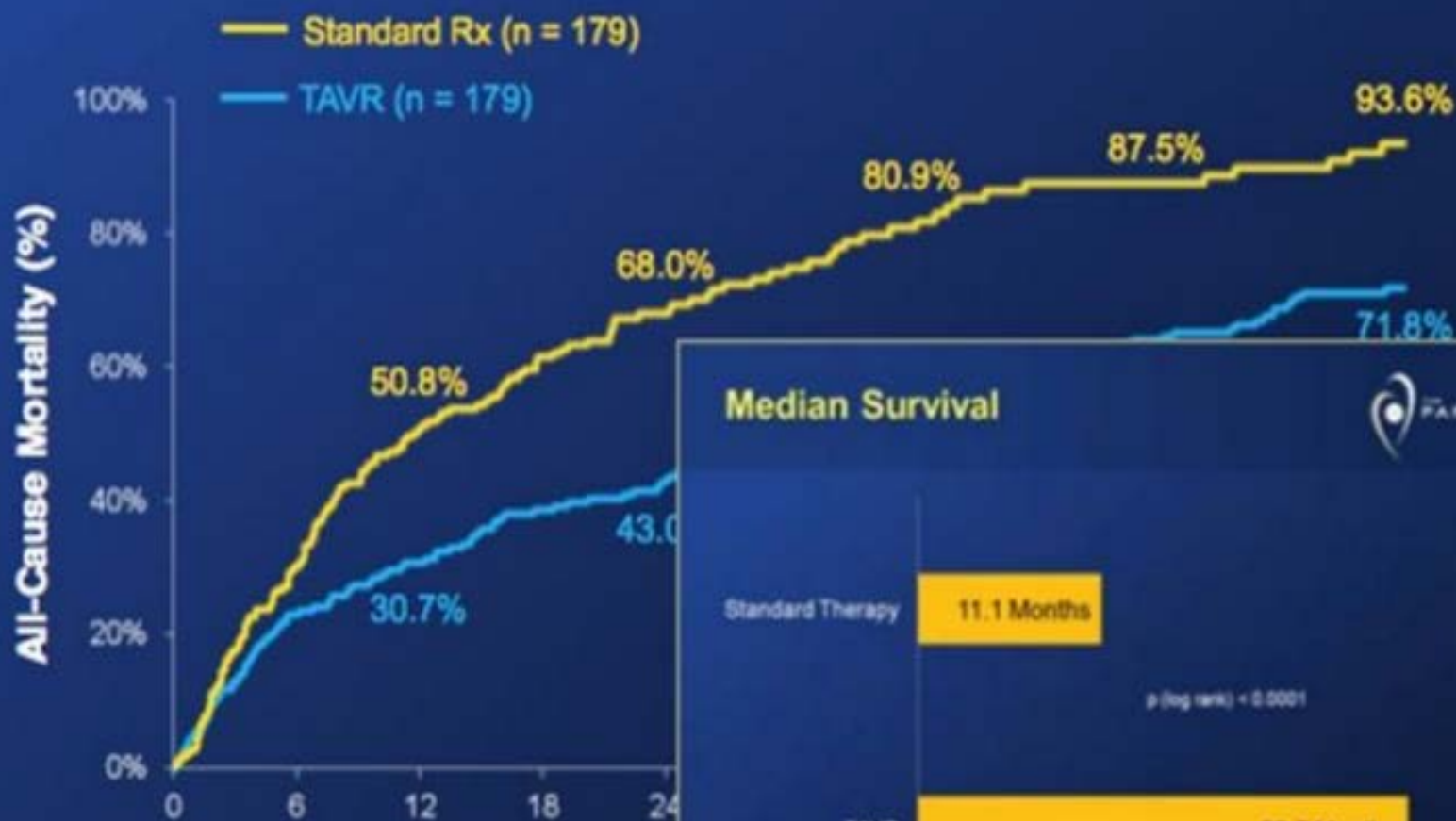


SOURCE: Credit Suisse TAVI Comment –January 8, 2015. ASP assumption for 2024 and 2025 based on analyst model. Revenue split assumption in 2025 is 45% U.S., 35% EU, 10% Japan, 10% ROW

- All-cause mortality < 3%
- Major (disabling) strokes < 2%
- Major vascular complications < 5%
- New permanent pacemakers < 10%
- Mod-severe para-valvular regurgitation < 5%

# All-Cause Mortality (ITT)

## Crossover Patients Censored at Crossover



### Median Survival



Standard Therapy

11.1 Months

$p$  (log rank) = 0.0001

TAVR

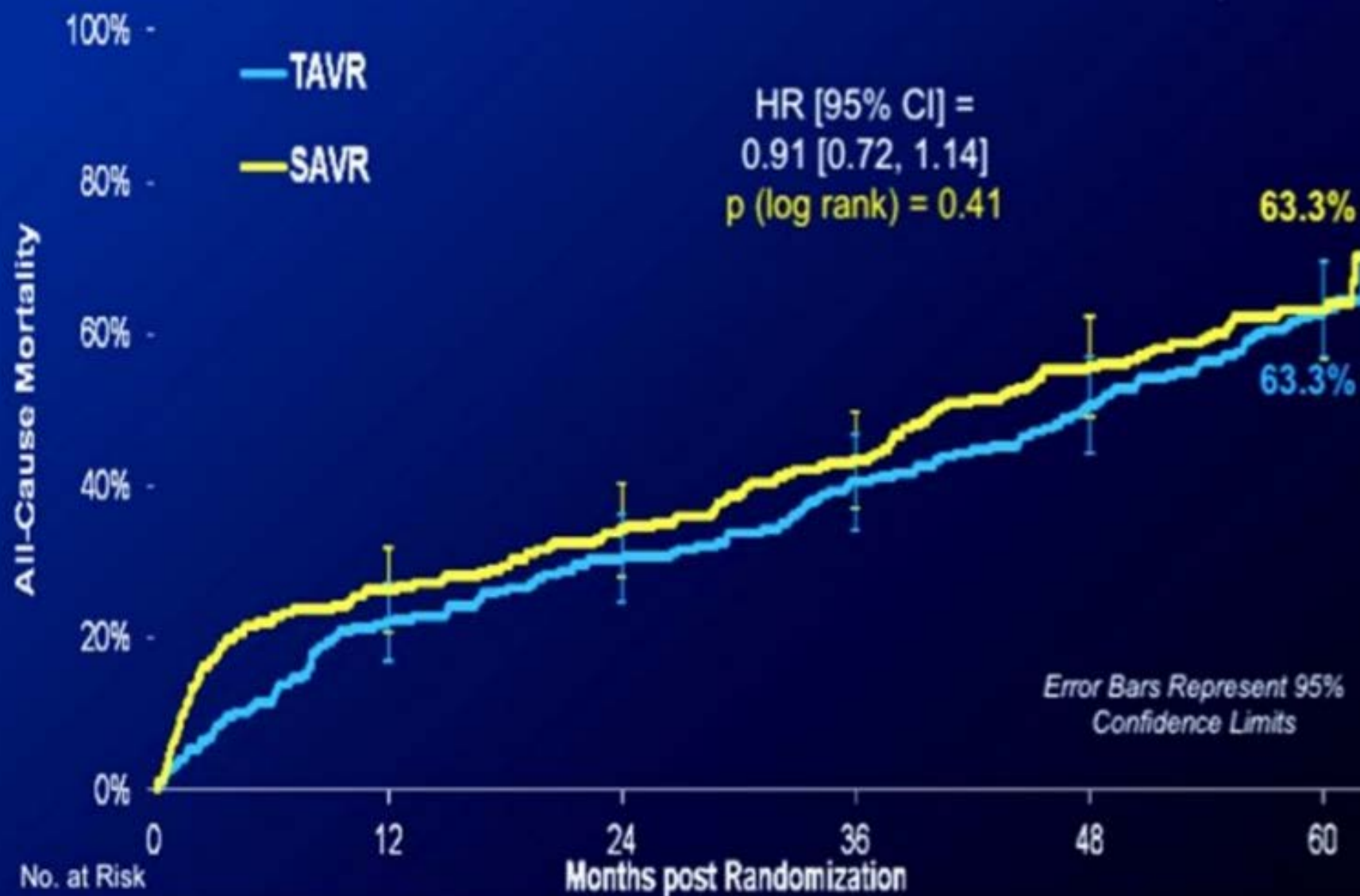
29.7 Months

Months

\* In an age and gender matched population, the mortality at 5 years is 40.5%

# All-Cause Mortality (ITT)

## Transfemoral Patients



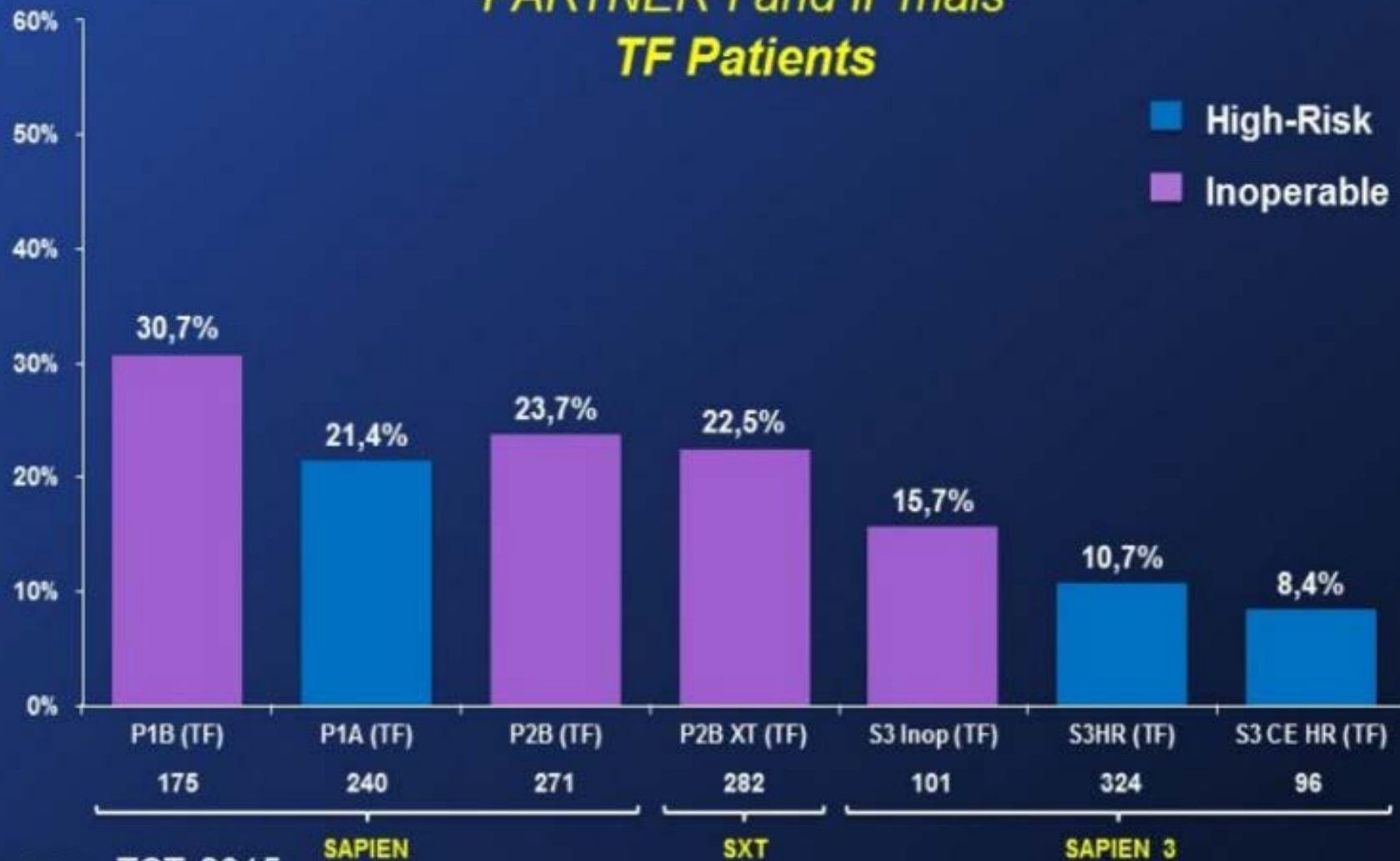


# All-Cause Mortality at 1 Year

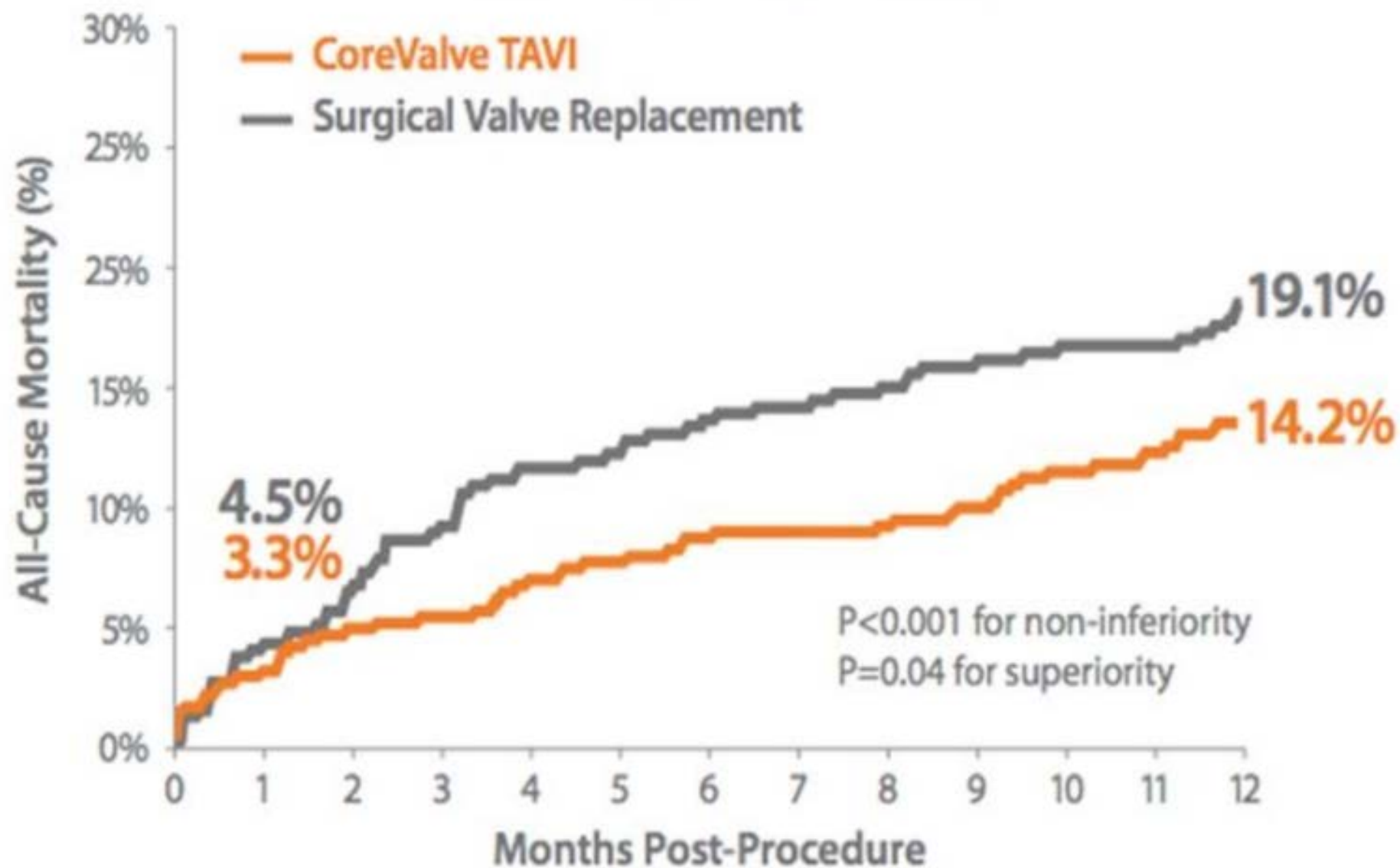
## Edwards SAPIEN Valves (As Treated Patients)



### *PARTNER I and II Trials* **TF Patients**



# US PIVOTAL TRIAL



Adams DH, Popma JJ, Reardon MJ, et al. Transcatheter aortic-valve replacement with a self-expanding prosthesis, *New Engl J Med* 2014;

**Pazienti operabili (95%)**

**Too  
Seek  
(Fragili)  
5%**

**BASSO Rischio operatorio (65%)**

**Rischio operatorio  
MODERATO, ALTO o  
ALTISSIMO (30%)**

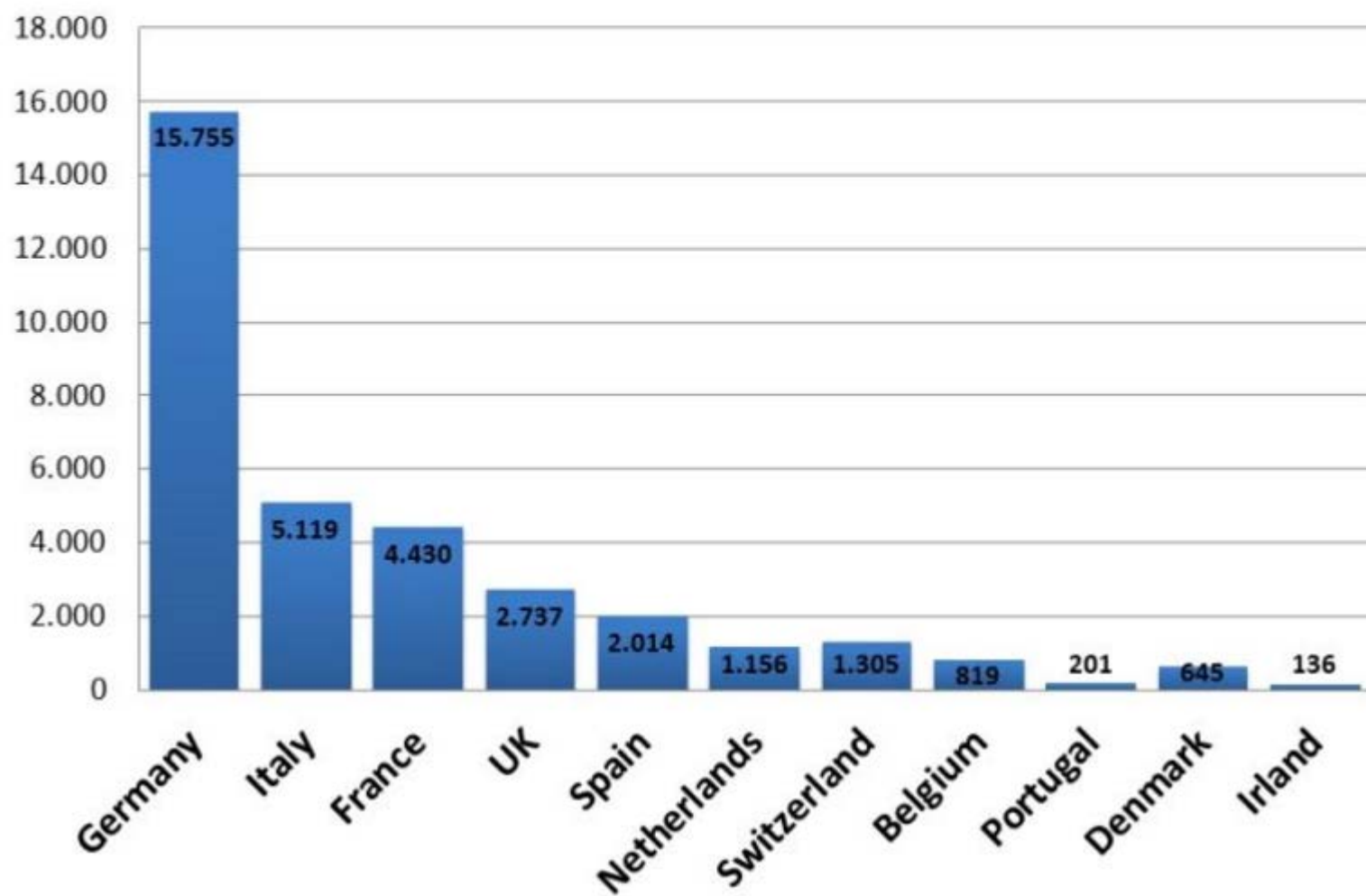
**Too  
Seek  
(Fragili)  
5%**

**PREFERIRE LA CHIRURGIA  
TRADIZIONALE**

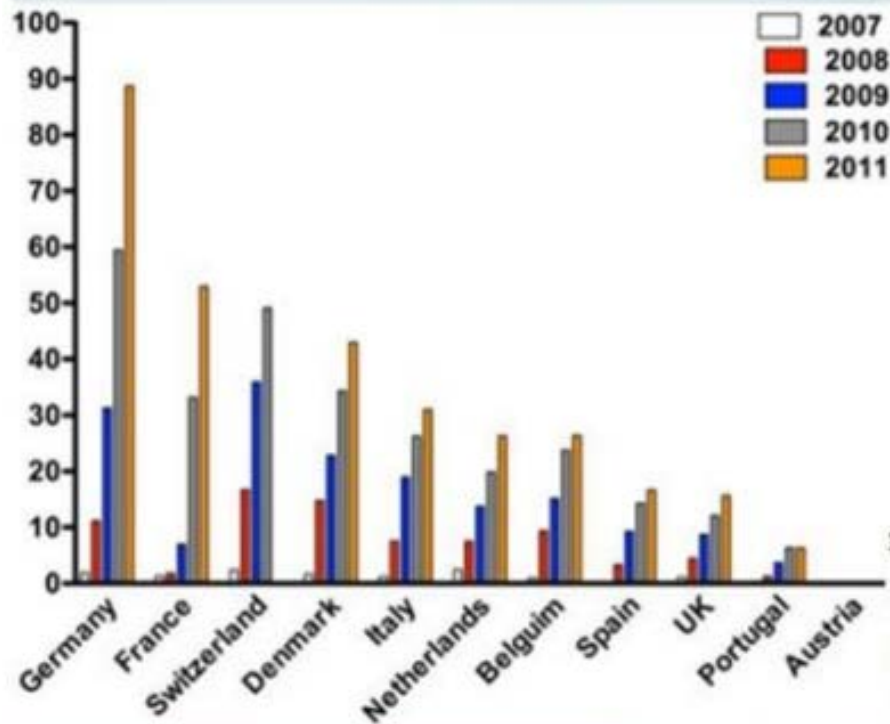
**PREFERIRE LA TAVI**

**NO  
INTERV  
ENTO**

## Cumulative Implants from 2007 to 2011



## TAVI Implants per Million 2007-2011



## TAVI Implants per Million $\geq 75$ y 2007-2011

